

Wanted

Be on the look-out for the

Asian Long-horned Beetle ATTACKING TREES!

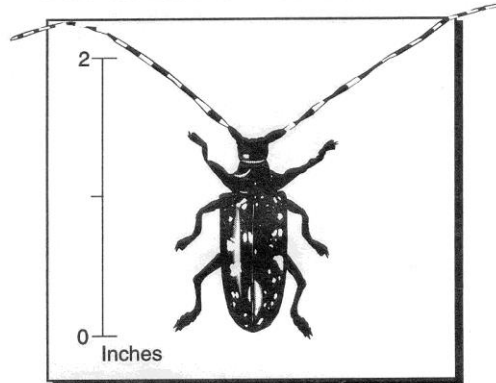


Figure 1. Actual size of the beetle's body is 1-1 ¼ inches.

What to look for:

- ☞ Adult beetles have 1-1 ¼ inch long bodies with 2 inch long antennae. Their bodies are black with white spots, and their antennae are black and white (*Figure 1*).
- ☞ Large (½ inch) round holes on the branches, trunk, or roots are places where the beetles leave the trees (*Figure 2*).
- ☞ Where females chew out a spot to lay their eggs, you may see oval, darkened places in the bark (*Figure 2*).
- ☞ You may find large piles of sawdust around the base of trees or branches caused by beetles exiting from inside the trees (*Figure 3*).

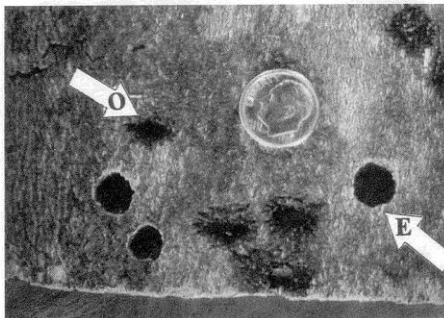


Figure 2. Beetle exit holes (E) and where eggs are laid (O) on a maple tree.



Figure 3. Sawdust from beetles chewing their way out of a tree.

<http://asianlonghornedbeetle.com>

Michigan DNR - Forest Health Marquette - Bob Heyd, 906-228-6561

MSU Extension - County Offices or Bill Cook (906-786-1575 or cookwi@msu.edu)